

OSPREY PACKS CASTLEWOOD 8-HR ADVENTURE RACE

RACE START INSTRUCTIONS/MAP 2

Saturday, December 7th

The Race Start will be located at Pacific Palisades Conservation Area

Order of Start:

1. Busses arrive, drop racers at TA 1, hand out Passport A/Map 2, bag GPS devices
2. Family teams prepare for on-the-water start while adult teams strategize for relay
3. Family teams start on the water to a roaring crowd!
4. Adult start relay begins

START RELAY INSTRUCTIONS (adult teams)

All teams start at TA 1.

Please cheer for family teams as they start. The adult start relay will not begin until family teams are paddling.

ALL TEAM MEMBERS MUST STAY ON THE ROAD AT ALL TIMES. No travel through the woods at any time. This will cancel our permit.

Leg 1: Trek to Checkpoint 1, pick up all PFDs for your team, and return to TA 1.

Leg 2: Must not start until Leg 1 is complete. Trek to Checkpoint 2, pick up all paddles for your team, and return to TA 1.

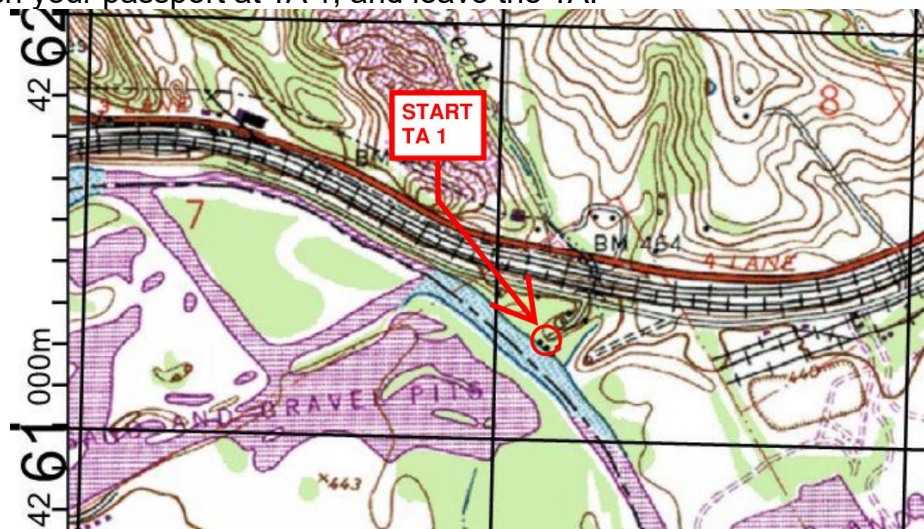
2-person teams send 1 team member per leg.

4-person teams send 2 team members per leg.

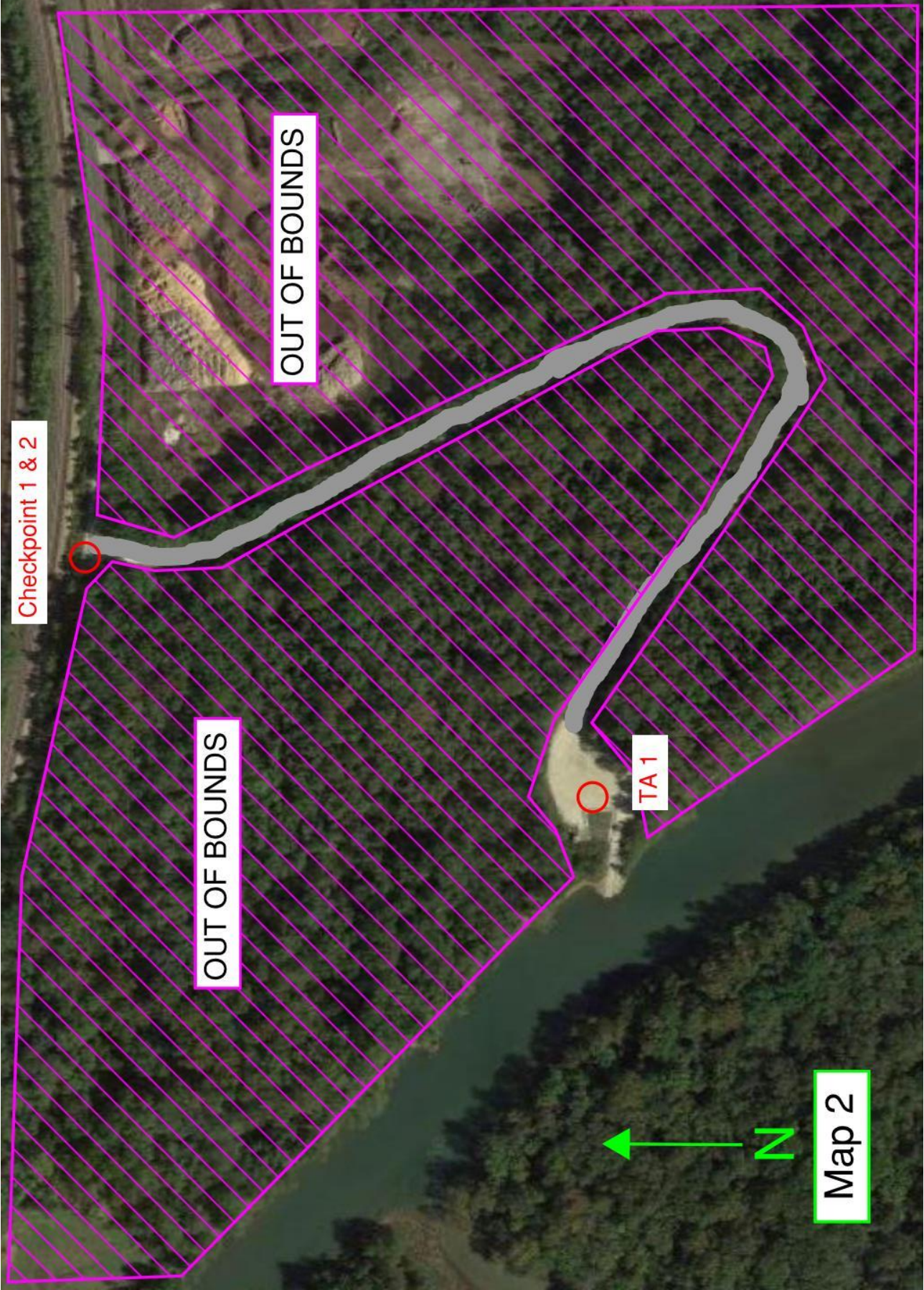
Each team member must participate. No duplicate runners!

Do not approach the canoes until your entire team has completed the relay!

Once your team has completed both legs and retrieved all paddles and PFDs, select a canoe, punch your passport at TA 1, and leave the TA.



(UTM EASTING 150699 140, UTM NORTHING 4261 250)



Checkpoint 1 & 2

OUT OF BOUNDS

OUT OF BOUNDS

TA 1

N

Map 2